

ENGINE COOLANT TEMPERATURE SENSOR (ECTS)

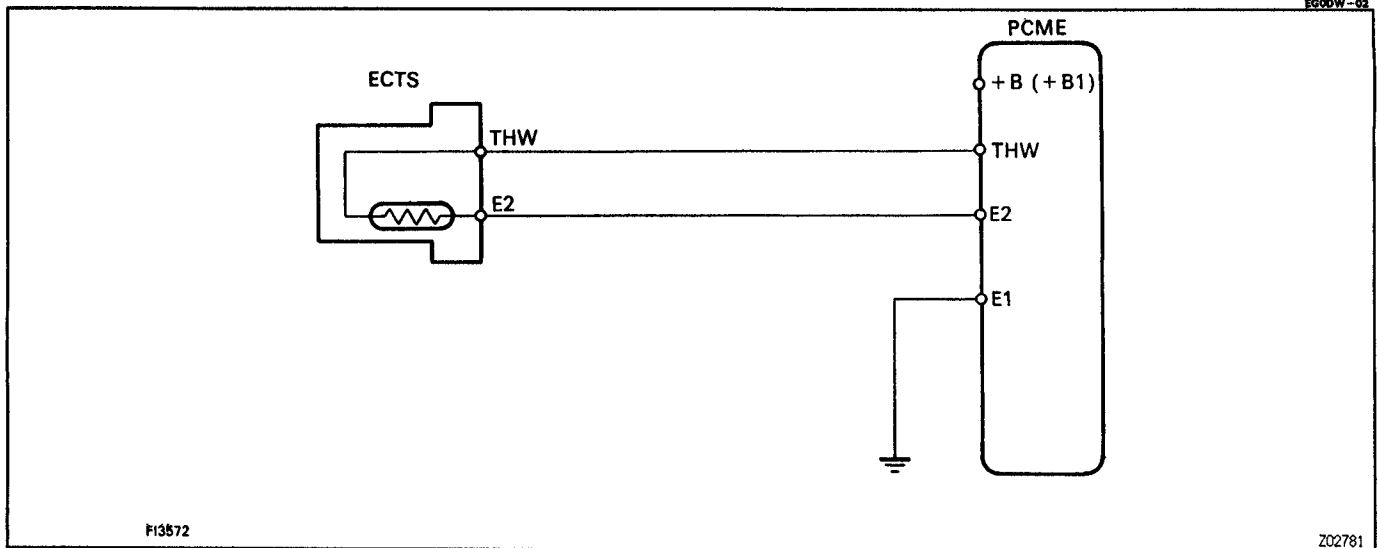


Diagram illustrating the inspection procedure for the ECTS sensor. An ohmmeter is connected to the terminals of the ECTS sensor. Below the diagram is a graph showing the relationship between Resistance (kΩ) and Temperature (°C and °F).

RESISTANCE kΩ

TEMPERATURE °C (°F)

Graph showing Resistance (kΩ) vs Temperature (°C and °F). The Y-axis ranges from 0.1 to 30 kΩ. The X-axis ranges from -20 to 100 °C (-4 to 212 °F). A shaded area labeled "Acceptable" indicates the range of resistance values.

Reference numbers: P01627, F14741, Z02917, EG00X-02

ENGINE COOLANT TEMPERATURE SENSOR (ECTS) INSPECTION

1. REMOVE ECTS
2. INSPECT ECTS

Using an ohmmeter, measure the resistance between the terminals.

Resistance:

Refer to the chart graph

If the resistance is not as specified, replace the ECTS.

3. REINSTALL ECTS