

C2 REAR SUSPENSION

REAR SUSPENSION-----	C2 - 1
BASIC CHECK AND ADJUSTMENT --	C2 - 1
REAR SHOCK ABSORBER AND	
REAR COIL SPRING -----	C2 - 2
REMOVAL AND INSTALLATION -----	C2 - 2
REAR SUSPENSION ARM -----	C2 - 5
REMOVAL AND INSTALLATION -----	C2 - 5
REAR STABILIZER BAR-----	C2 - 8
REMOVAL AND INSTALLATION -----	C2 - 8

1 REAR SUSPENSION

1-1 BASIC CHECK AND ADJUSTMENT

1-1-1 CHECK OF EACH PART OF SUSPENSION

(1) Operations prior to check

- 1.Lift up the vehicle.
- 2.Remove the rear disc wheel.

Refer to Page C3-3.

(2) Check of bolts for tightening conditions

- 1.Visually check each attaching section of the axle and suspension for loosening.

(3) Check of excessive play

- 1.Check each part of the axle and suspension given in the following item to see if any looseness is present.
 - (1) Each part of suspension
 - (2) Rear axle hub & bearing

(4) Check of damage

- 1.Visually check each part of the axle and suspension to see if any damage is present.

(5) Check of shock absorber for oil leakage

- 1.Visually check the rear shock absorber sleeve section, etc. to see if any oil leakage is present.

1-1-2 REAR WHEEL ALIGNMENT

- 1.The rear wheel alignment has no adjusting mechanism. (The following values are referential values.)

(1) Toe-in

SPECIFIED VALUE: 3.0 ± 3.3 mm

(2) Camber angle

SPECIFIED VALUE: $-0^{\circ}45' \pm 45'$

(3) Rear wheel alignment

SPECIFIED VALUE: In 10 mm - out 3 mm

2 REAR SHOCK ABSORBER AND REAR COIL SPRING

2-1 REMOVAL AND INSTALLATION

2-1-1 ARTICLES TO BE PREPARED

Instrument

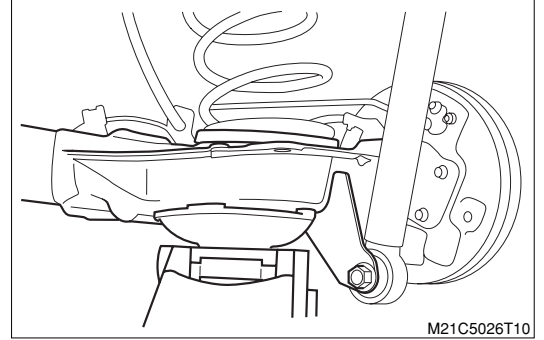
Torque wrench

2-1-2 OPERATION BEFORE REMOVAL

1. Lift up the vehicle.
2. Remove the disc wheels. (Rear)
Refer to Page C3-3.
3. Support the rear suspension arm Ay with a garage jack.

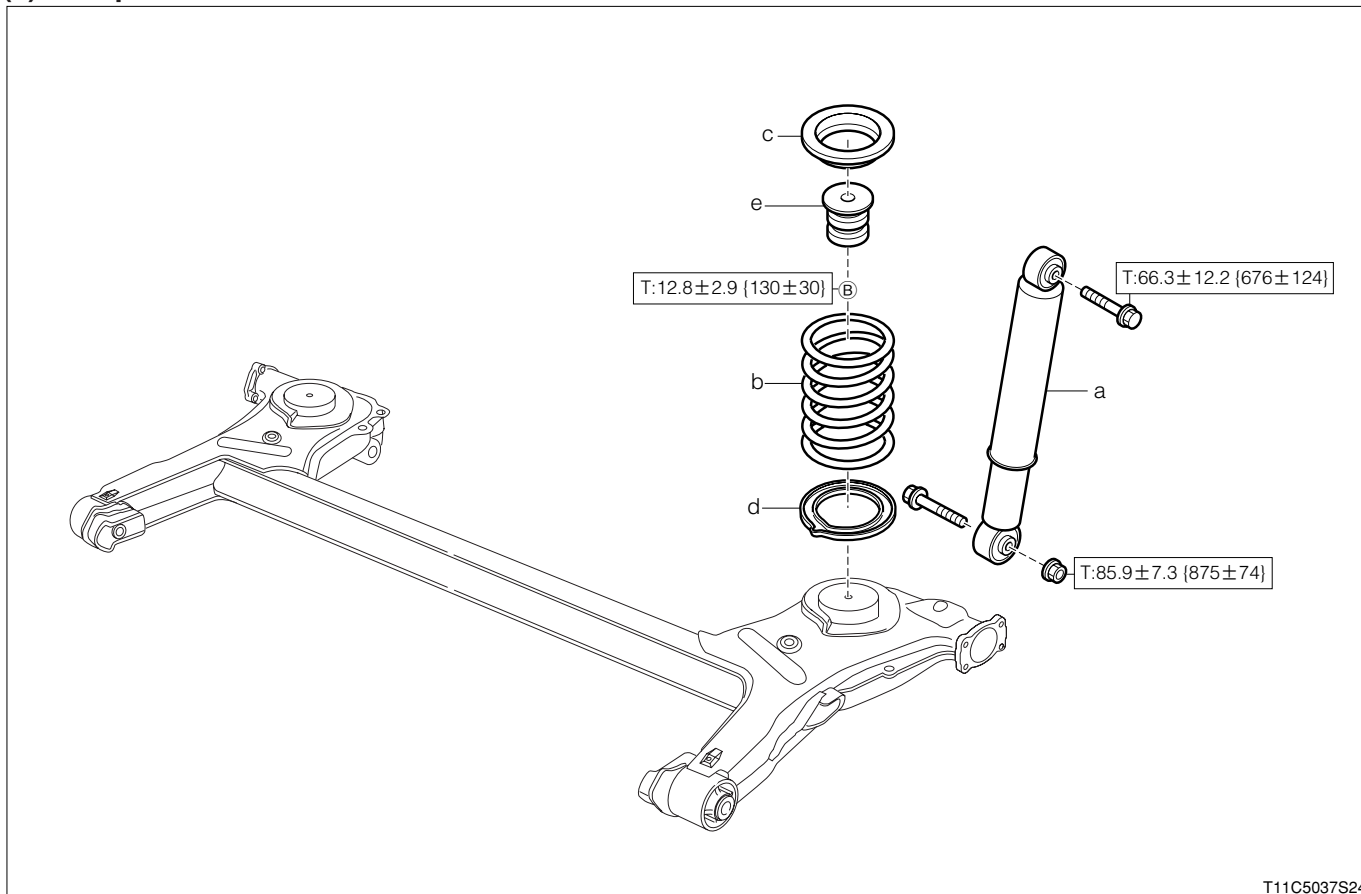
CAUTION

- Make sure to support the trailing arm with a garage jack. Never apply the jack to the bracket section below the rear shock absorber or the torsion beam section.
- When using a garage jack, interpose a cloth or the like so as not to scratch the affected surface.



2-1-3 REMOVAL AND INSTALLATION PROCEDURES

(1) Components



T11C5037S24

Unit:N·m{kgf·cm}

(2) Removal and installation procedures

- ▲ 1 a Absorber, shock, rear
- ▼ ▲ 2 b Spring, coil, rear
- 3 c Seat, rear spring, upper
- 4 d Seat, rear coil spring, lower
- 5 e Bumper, rear spring

2-1-4 POINTS OF REMOVAL

(1) Spring, coil, rear

1. When the spring is removed, slowly lower the jack that is supporting the rear suspension arm Ay.

2-1-5 INSPECTION

(1) Absorber, shock, rear

1. Extend and compress the absorber. If any abnormality is present, replace the shock absorber.
SPECIFIED VALUE: When the shock absorber is compressed by hand, ensure that it can be compressed with a certain resistance, but without binding.
 When you release your hand after compressing the shock absorber, ensure that it is extended at a constant speed by itself.

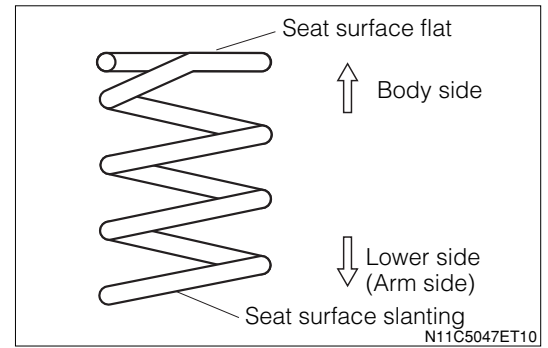
(2) Spring, coil, rear

1. Check the spring for cracks, wear and damage. If any damage is present, replace the spring.

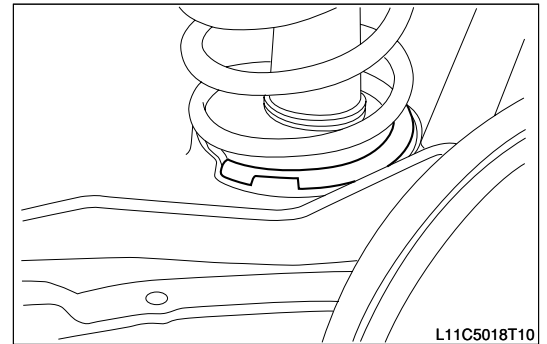
2-1-6 POINTS OF INSTALLATION

(1) Spring, coil, rear

1. Set the vertical direction of the spring in to such a direction as shown in the right figure.



2. Align the lower edge section of the spring with the groove of the rear suspension arm Ay during the installation.



(2) Absorber, shock, rear

1. With the rear coil spring set to the specified position, slowly raise the jack supporting the rear suspension arm Ay.
2. Compress the rear coil spring and raise the rear suspension arm Ay up to a point where the shock absorber can be installed. Then, install the shock absorber.

2-1-7 OPERATION AFTER INSTALLATION

1. Remove the garage jack.
2. Install the disc wheels. (Rear)

Refer to Page C3-3.

3. Jack down the vehicle. Rock the vehicle up and down several times so as to settle down the suspensions.
4. Under a condition where the vehicle weight is applied, tighten the attaching bolts and nuts of the rear shock absorber to the specified torque.

3 REAR SUSPENSION ARM

3-1 REMOVAL AND INSTALLATION

3-1-1 ARTICLES TO BE PREPARED

Instrument

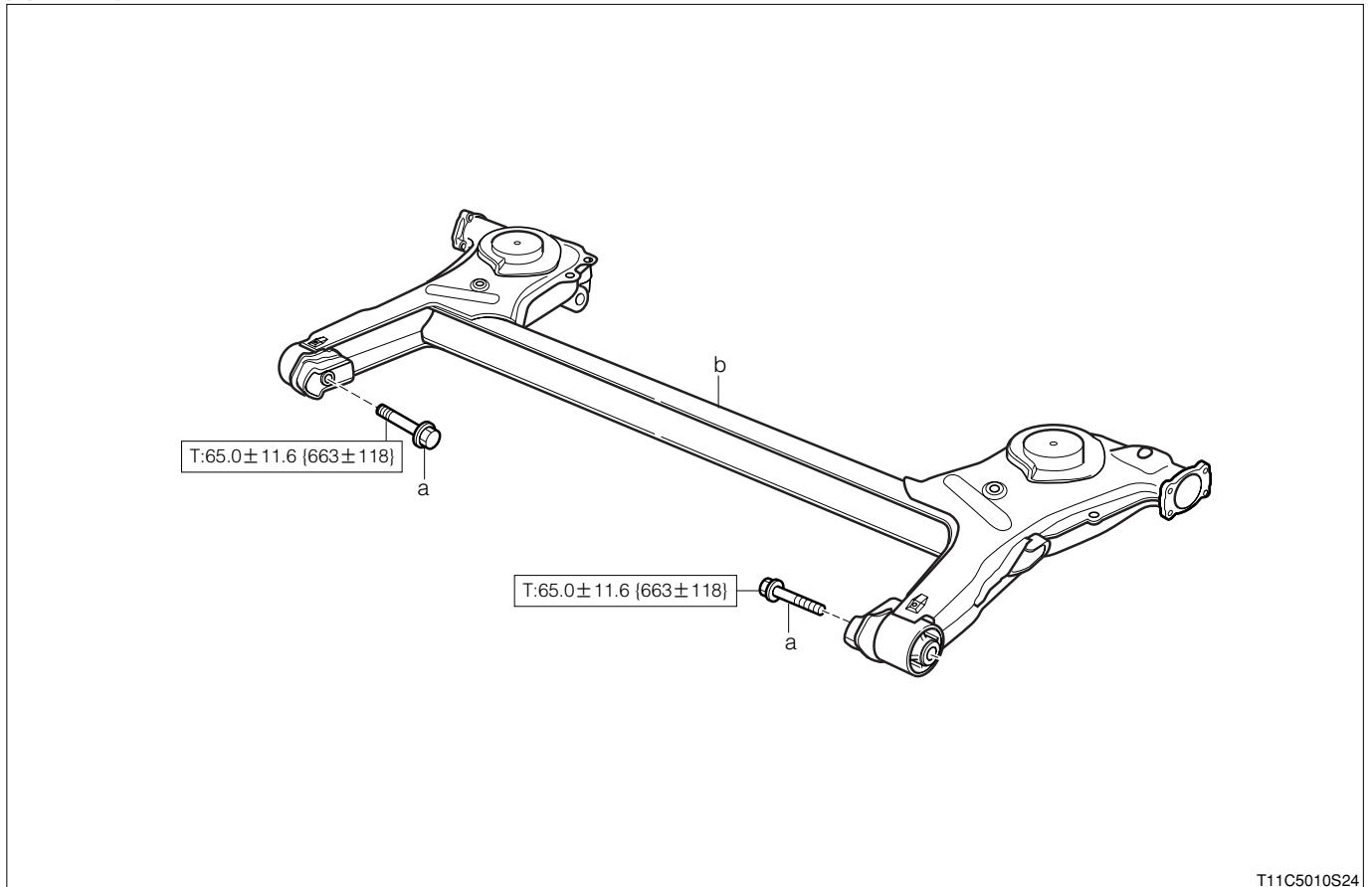
Torque wrench

3-1-2 OPERATION BEFORE REMOVAL

- 1.Lift up the vehicle.
- 2.Remove the disc wheels. (Rear)
Refer to Page C3-3.
- 3.Remove the rear stabilizer bar. (Rear stabilizer bar equipped vehicles)
Refer to Page C2-8.
- 4.Remove the rear shock absorber and rear coil spring.
Refer to Page C2-2.
- 5.Remove the flexible hose from the rear suspension arm Ay.
Refer to Page E1-46.
- 6.Remove the rear brake Ay.
Refer to Page E1-65.
- 7.Remove the RH/LH speed sensor wires from the rear suspension arm Ay. (ABS-equipped vehicles)
Refer to Page E3-6.
- 8.Remove No.2/No.3 parking brake cable Ay from the rear suspension arm Ay.
Refer to Page E2-2.

3-1-3 REMOVAL AND INSTALLATION PROCEDURES

(1) Components



T11C5010S24

Unit:N·m{kgf·cm}

(2) Removal and installation procedures

- 1 a Shaft, rear suspension lower arm, No.1
- ▲ 2 b Arm Ay, rear suspension

3-1-4 POINTS OF INSTALLATION

(1) Arm Ay, rear suspension

1. Temporarily tighten the arm Ay with a bolt and a nut.

3-1-5 OPERATION AFTER INSTALLATION

1. Install the No.2/No.3 parking brake cable Ay to the rear suspension arm Ay.
Refer to Page E2-2.
2. Install the RH/LH speed sensor wires to the rear suspension arm Ay. (ABS-equipped vehicles)
Refer to Page E3-6.
3. Install the rear brake Ay.
Refer to Page E1-65.
4. Install the flexible hose to the rear suspension arm Ay.
Refer to Page E1-46.
5. Install the rear shock absorber and rear coil spring.
Refer to Page C2-2.
6. Install the rear stabilizer bar. (Rear stabilizer bar equipped vehicles)
Refer to Page C2-8.
7. Install the disc wheels. (Rear)
Refer to Page C3-3.
8. Lift down the vehicle. Rock the vehicle up and down several times so that the suspensions may be settled.
9. Under a condition where the vehicle weight is applied, tighten the attaching bolts and nuts of the rear suspension arm Ay and rear shock absorber to the specified torque.

4 REAR STABILIZER BAR

4-1 REMOVAL AND INSTALLATION

4-1-1 ARTICLES TO BE PREPARED

Instrument

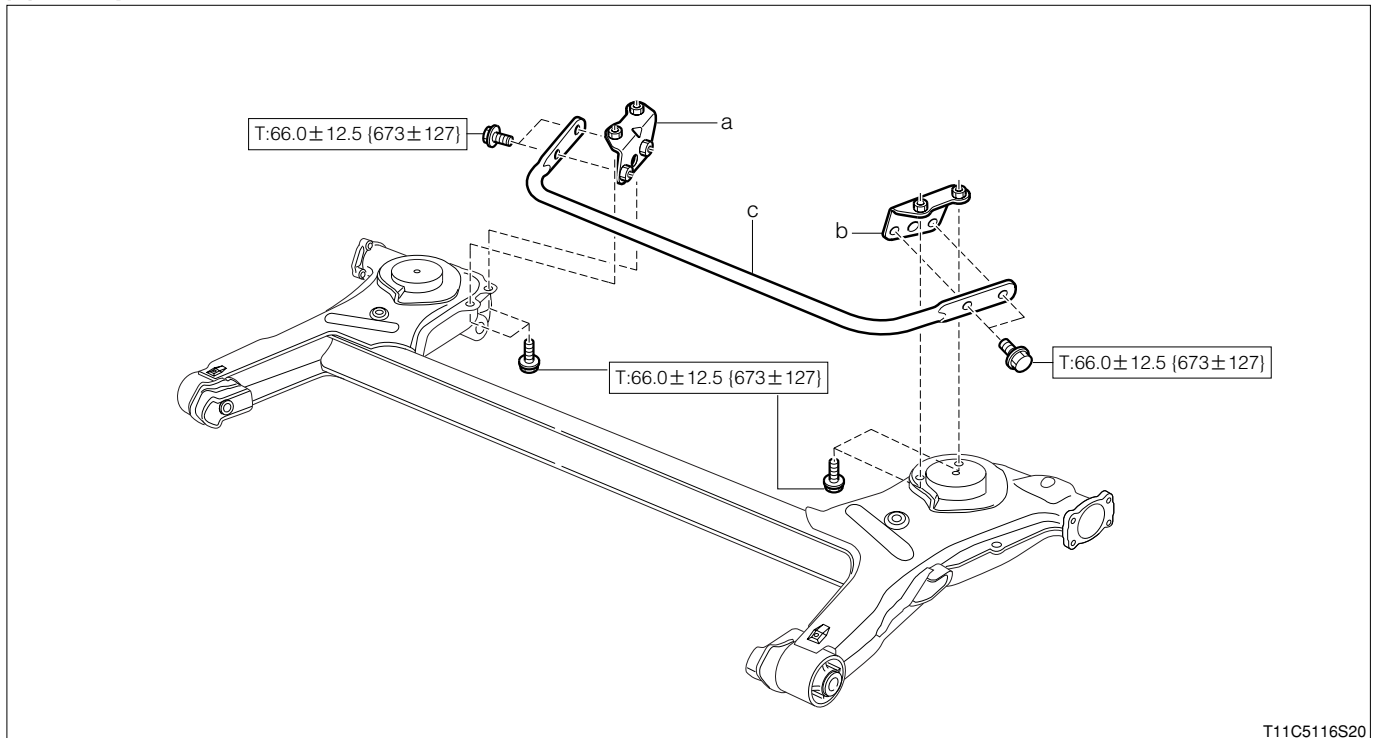
Torque wrench

4-1-2 OPERATION BEFORE REMOVAL

1. Lift up the vehicle.

4-1-3 REMOVAL AND INSTALLATION PROCEDURES

(1) Components



Unit:N·m{kgf·cm}

(2) Removal and installation procedures

- 1 a Bracket, stabilizer, RH
- 2 b Bracket, stabilizer, LH
- ▲ 3 c Bar, stabilizer, rear

4-1-4 POINTS OF INSTALLATION

(1) Bar, stabilizer, rear

1. Install the RH/LH stabilizer bracket to the bar.
2. Install the bar to the rear suspension arm Ay.

4-1-5 OPERATION AFTER INSTALLATION

1. Lift down the vehicle.